

# HIGH POWER INDUSTRIAL VACUUM CLEANERS FOR LOCALISED DISCHARGE

## DHV 45 AF HOPPER

High performance hopper-mounted industrial vacuum cleaner with lobe pump. Its exceptional suction performance makes it ideal for continuous, heavy duty use in working conditions typical of heavy industry where there are large quantities of material to be vacuumed. The filtering system comprises of polyester felt filter sleeves with internal tensioning springs & polyester safety cartridge to protect the pump. An automatic time-controlled system cleans the filters via chamber backwash valves, ensuring maximum performance even in continuous & prolonged use. Compressed air for actuating the valves is supplied by a compressor installed on board the machine. The lower hopper has a capacity of 1000L & can be emptied at the bottom via a manually-controlled butterfly valve. Pneumatic actuators & other types of discharge options are available. Large inspection doors allow easy access to the engine compartment, while eyebolts make it easy to handle the unit by forklift. A push-button panel means you can easily operate the vacuum cleaner without having to directly access the electric panel.

Raising frame available for Big Bag emptying. Available in ATEX-certified version



### SUCTION UNIT

The suction unit is provided with a volumetric vacuum pump with tri-lobe rotors which can reach very high airflow and waterlift levels. A safety filter guarantees the maximum protection for both motor and pump. The electrical panel is suitable to be controlled remotely and a push-button is installed on the chassis as standard.



### FILTRATION UNIT

2 sets of filtering sleeves work continuously and alternatively. Doing so, they guarantee the maximum filtration efficiency and protection for the motor. The filter is cleaned by an automatic system with backwash of the chambers. Compressed air is provided by an onboard compressor.

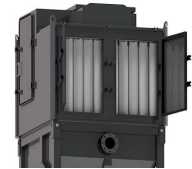


### COLLECTION UNIT

The unit is manufactured with thick painted steel for improved sturdiness and a long-lasting lifetime. Integrated butterfly valve for discharge. The material is safely and quickly discharged by means of a lever. On request, other automatic discharge systems are available.

### Main Features:

- Unit for localised discharge
- Integrated automatic filter cleaning system
- Sturdy vacuum cleaner for intensive use
- Powerful lobe pump with electric motor
- High performances and long-lasting equipment
- High efficiency filtration
- Discharge system by means of a valve
- Low noise level
- Great autonomy of the system



### MODELS AND DATASHEET

MODELS	DHV 45 AF HOPPER
Power (V - Hz)	400 - 50
Power (Kw)	45
Electrical Protection (IP)	55
Max Waterlift (mmH2O)	5000
Max Airflow (m3/h)	2500
Suction Inlet (mm)	140
Filter Type	30 Sleeves
Surface Diameter (cm2-mm)	160,000 - 120
Material - Efficiency (IEC 60335-2-69)	Polyester - M
Cleaning System	Automatic
Secondary Filter	Safety Cartridge
Surface (cm2)	70,000
Capacity (Litres)	1000
Discharge System	Butterfly Valve
Dimensions (cm)	168 x 160 x 356H
Weight (kg)	2240



HEAVY INDUSTRY



STEELWORKS & FOUNDRIES



POWER PLANTS



CEMENT WORKS & CONSTRUCTION INDUSTRY